



**CONVERSATION  
MEETING**

DEAF AGGIES & FRIENDS

# QUICK RECAP

HOWDY

HELLO

WHAT'S UP

FROM

LIVE

ABC'S

I, ME, YOU, YOUR

MAJOR/MINOR/PROFESSION

# QUICK IMPORTANT NOTES

## BIG DEAF VS LITTLE D DEAF

WHAT DOES THIS MEAN?

BIG D DEAF IS SOMEONE WHO IDENTIFIES WITH THE DEAF COMMUNITY.

LITTLE D DEAF IS SOMEONE WHO VIEWS THEIR DEAFNESS AS SOMETHING LIKE AN AILMENT.

D/DEAF



# QUICK IMPORTANT NOTES

## GRAMMAR STRUCTURE

ASL USES THE FORM TOPIC-COMMENT IN ITS SENTENCE STRUCTURE.

THE TOPIC IS WHATEVER THE MAIN POINT OF THE CONVERSATION IS, WHILE THE COMMENT IS THE FOLLOWING INFORMATION ABOUT SAID POINT.

D/DEAF

GRAMMAR  
STRUCTURE



# QUICK IMPORTANT NOTES

## FACIAL EXPRESSIONS

WHY ARE THEY IMPORTANT?

FACIAL EXPRESSIONS AND BODY LANGUAGE ARE USED TO CONVEY THE EMOTION OR "TONE OF VOICE" ABOUT WHATEVER YOU'RE TALKING ABOUT.

D/DEAF

GRAMMAR  
STRUCTURE

FACIAL  
EXPRESSIONS

# MEET THE W'S

**WHO**

**WHAT**

**WHEN**

**WHERE**

**WHY**

**HOW**

# EXAMPLE QUESTIONS/PHRASES

WHAT IS YOUR NAME? (YOUR NAME WHAT?)

HOW ARE YOU?

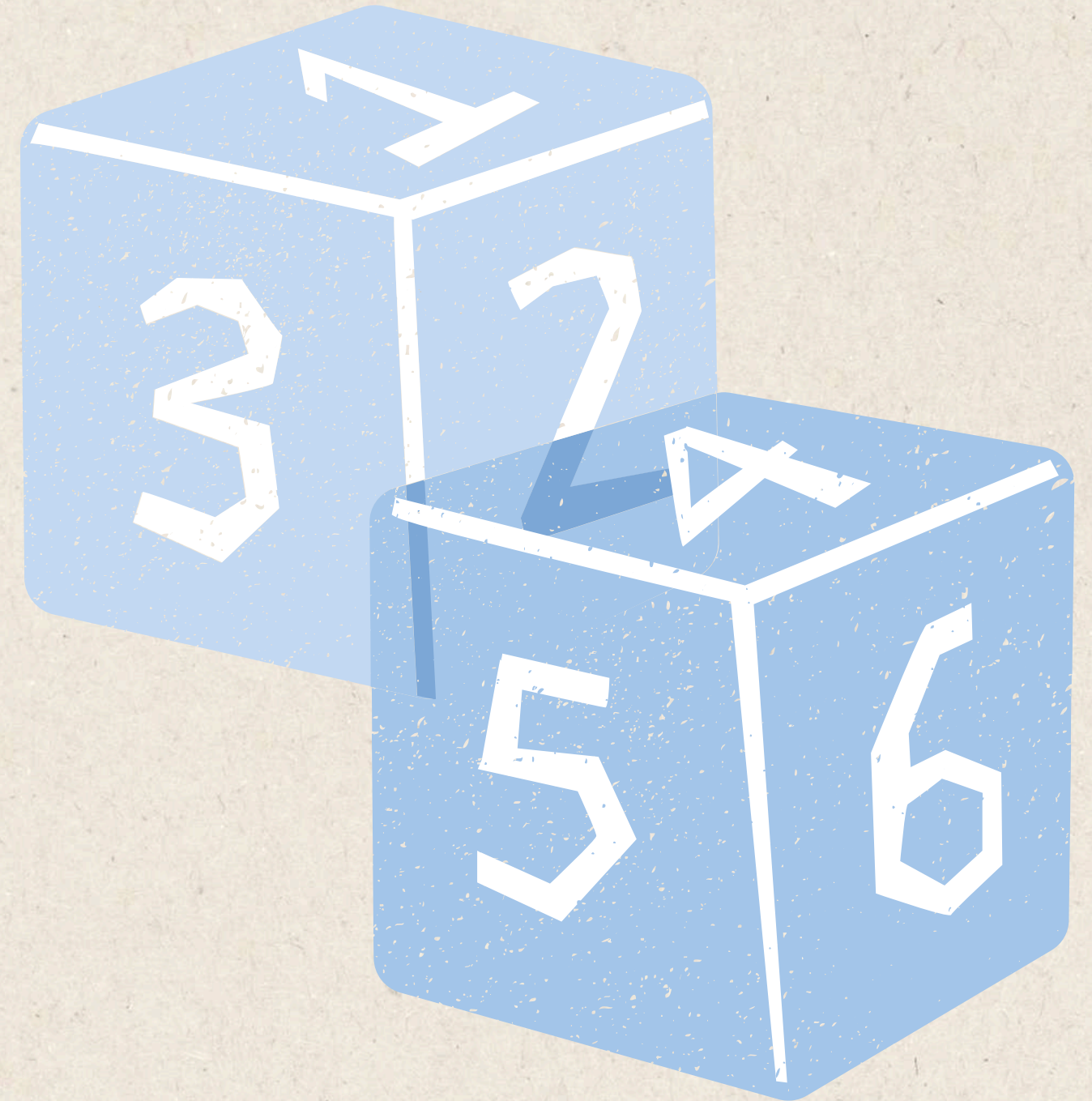
NICE TO MEET YOU.

WHERE ARE YOU FROM? (YOU FROM WHERE?)

WHERE DO YOU LIVE? (YOU LIVE WHERE?)

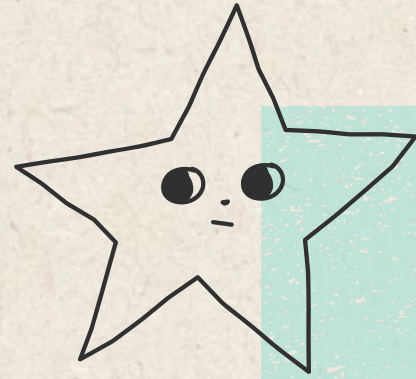
PLEASE, THANK YOU, YOU ARE WELCOME

HOW OLD ARE YOU?



# PRACTICE TIME!

CREATE GROUPS OF 2-4 (DEPENDING ON ATTENDANCE) AND TRY TO PRACTICE SOME QUESTIONS AND ANSWERS FROM OUR LAST TWO MEETINGS!



## EXAMPLE TOPICS

WHAT IS YOUR NAME?  
WHAT IS YOUR MAJOR? MINOR?  
HOW OLD ARE YOU?  
WHERE ARE YOU FROM?  
WHAT IS YOUR DREAM PROFESSION?





# **GAME TIME - TELEPHONE RACE**

**GET IN TWO LINES SIDE BY SIDE**

**ON EACH SIDE, HAVE THE FIRST PERSON IN LINE (NEAREST THE SCREEN) TURN TO FACE**

**THE OFFICER BEHIND THEM**

**EVERYONE ELSE FACE FORWARD**

**THE TWO LINE LEADERS WILL GET 3 TIMES TO SEE THE SENTENCE FROM THE OFFICER, THEN**

**THEY MUST TURN AROUND AND TAP THE PERSON BEHIND THEM TO SHOW THEM**

**THIS WILL CONTINUE AS FAST AS POSSIBLE DOWN THE LINE**

**EACH STUDENT GETS TO SEE IT 3 TIMES TOTAL**

**AT THE END, THE FASTEST AND MOST CORRECT LINE WINS!**

# COMING UP:

**REC SOCIAL: FEBRUARY 21ST, TBD ON TIME**

**DUES: DUE APRIL 1ST**

**BIG EVENT SIGN UP: IF YOU ARE INTERESTED, PLEASE TALK TO AN OFFICER  
SO WE CAN EMAIL YOU!**



**THANK  
YOU VERY  
MUCH**

